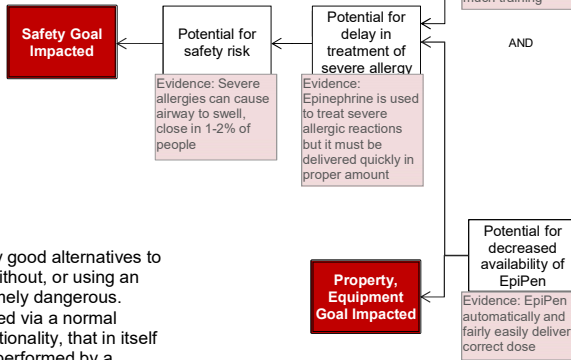
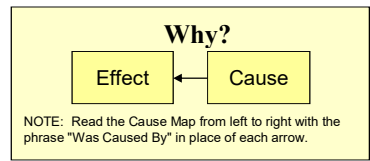


1 Problem

What When	Problem(s)	Significant increases in cost of EpiPen
	Date	Ongoing
	Different, unusual, unique	Epinephrine degrades quickly; ~10% of children need >1 dose from EpiPen; no generic version currently available
Where	Facility, site	US
	Unit, area, equipment	EpiPen: epinephrine auto-injection device
	Task being performed	Treatment of anaphylaxis allergic reaction
Impact to the Goals	Safety	Potential for safety risk
	Compliance	Questioning by Senate
	Patient Services	Significant increase in cost of medication
	Property/ Equipment	Potential for decreased availability of medication
	Frequency	3.6 million people have an EpiPen prescription

2 Analysis



3 Solutions

Unfortunately, there aren't many good alternatives to paying for the EpiPen. Going without, or using an expired EpiPen, could be extremely dangerous. While epinephrine can be injected via a normal syringe without the EpiPen functionality, that in itself carries risk and should only be performed by a trained professional. (Many governments are providing epinephrine, syringes and training to emergency medical responders to avoid the cost of multiple EpiPens.)

Most of the general public will just have to wait: for a generic to be introduced, for Adrenaclick to be covered by insurance, or for the Senate to quash the price gouging.

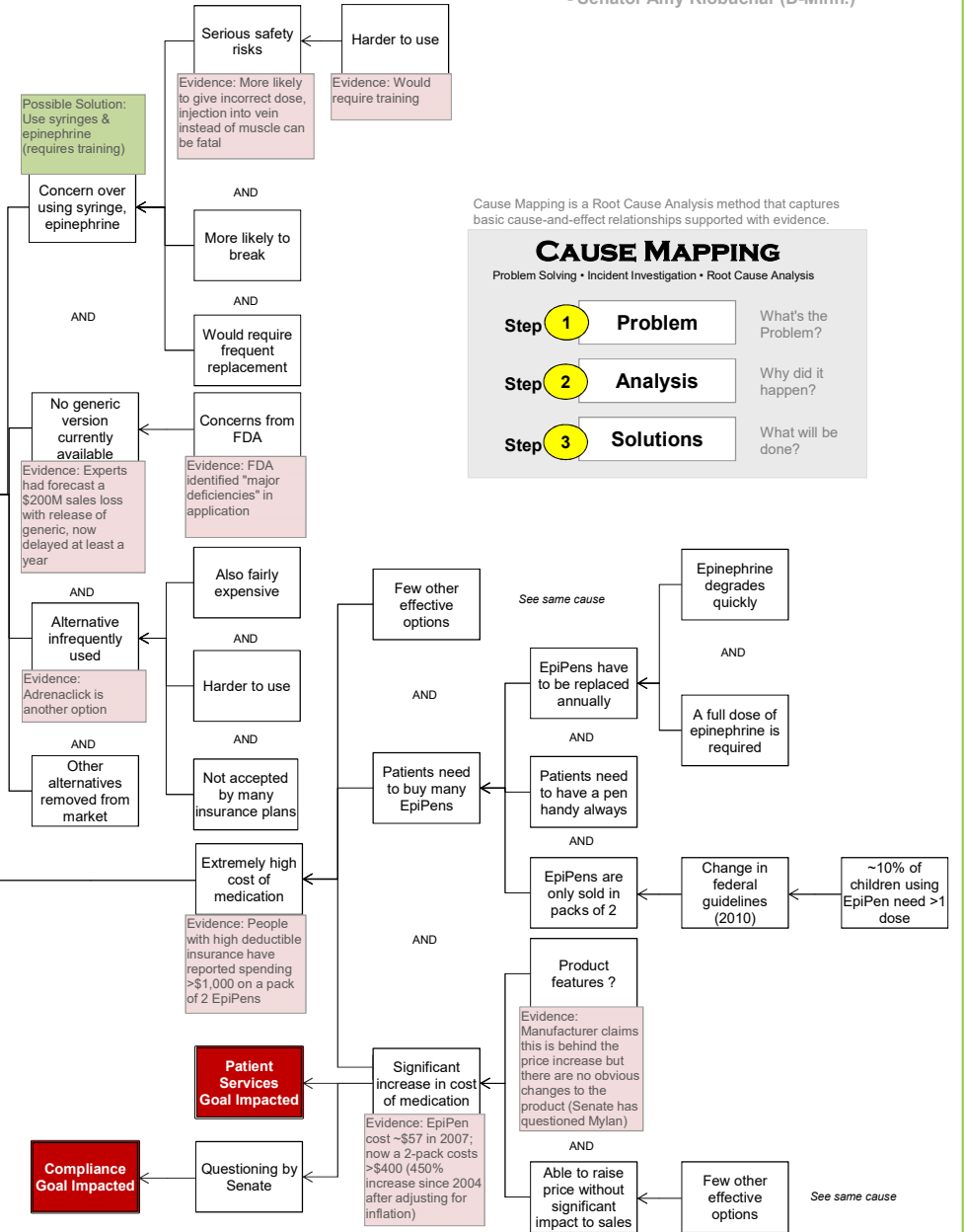
For a free copy of our Root Cause Analysis Template in Microsoft Excel, used to create this page, visit our web site.

ThinkReliability
 Investigate Problems. Prevent Problems.
 Houston, Texas 281-412-7766 ThinkReliability.com
 Copyright ThinkReliability 2016

RISING EPIPEN COSTS STUN CONSUMERS

Cause Map

"This outrageous increase in the price of EpiPens is occurring at the same time that Mylan Pharmaceuticals is exploiting a monopoly market advantage that has fallen into its lap."
 - Senator Amy Klobuchar (D-Minn.)



Cause Mapping is a Root Cause Analysis method that captures basic cause-and-effect relationships supported with evidence.

CAUSE MAPPING
 Problem Solving • Incident Investigation • Root Cause Analysis

Step 1 Problem What's the Problem?

Step 2 Analysis Why did it happen?

Step 3 Solutions What will be done?