

# NILE MONITOR LIZARDS

Cause Map

## 1 Problem

<b>What</b>	Problem(s)	Invasive Nile monitor lizards in Florida
<b>When</b>	Date	Ongoing, first spotted in 1990
	Different, unusual, unique	Habitant suitable for Nile monitor lizards' survival
<b>Where</b>	Facility, site	Southern Florida
	Unit, area, equipment	Permeant breeding populations in (Cape Coral, West Palm Beach, and Homestead)
	Task being performed	Likely introduced when pets escaped/ were released

## Impact to the Goals

<b>Safety</b>	Potential for injury
<b>Environmental</b>	Negative impact on native wildlife
<b>Labor/ Time</b>	Resources required to study/control Nile monitor lizards

## Florida under attack by another invasive species. This time it's huge lizards.

Florida's warm climate has made it an appealing home to many invasive species, such as Burmese pythons and giant African land snails. Researchers fear another species, the Nile monitor lizard, is also threatening native wildlife. Nile monitor lizards are intimidating reptiles, growing up to 5 feet long, and they are not fussy about what they eat, consuming almost anything smaller than they are. They will feed on mammals, birds, reptiles, amphibians, fish and eggs. There have even been reports of Nile monitor lizards making a meal out of pet cats.

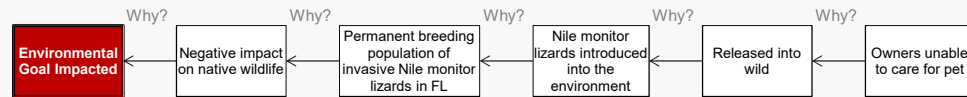
"Every bit of biological and ecological info we can get about a species in its native range takes us one step closer to coming up with a management strategy to control it in its introduced range. I don't think we'll ever eradicate Nile monitors from Florida but hopefully we can contain them."

-Steve Johnson from the University of Florida

## 2 Analysis

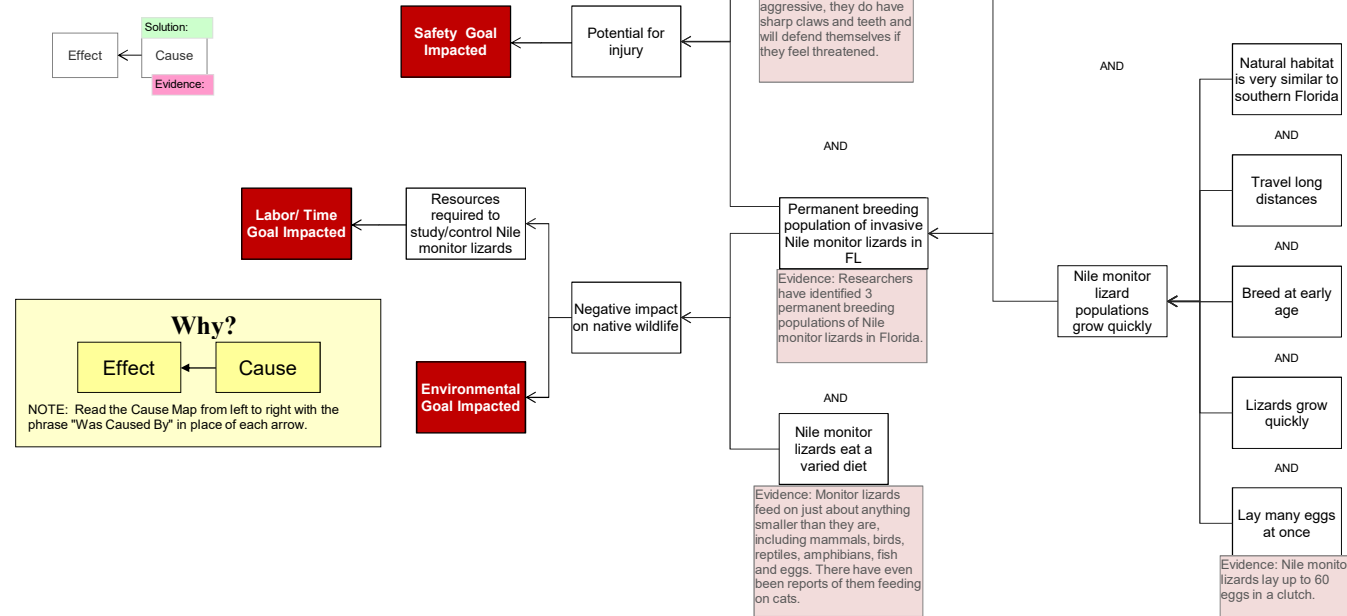
### Basic Level Cause Map

- Asking 5 Why questions is an easy way to start the investigation.



### More Detailed Cause Map

- Add detail as information becomes available. More Why questions can be asked to expand the investigation past a simple 5-Why. If one effect has two causes, list both causes vertically and separate with an "and".



Cause Mapping is a Root Cause Analysis method that captures basic cause-and-effect relationships supported with evidence.

### CAUSE MAPPING

Problem Solving • Incident Investigation • Root Cause Analysis

- Step 1 **Problem** - What's the Problem?
- Step 2 **Analysis** - Why did it happen?
- Step 3 **Solutions** - What will be done?

For a free copy of our Root Cause Analysis Template in Microsoft Excel, used to create this page, visit our web site.

**ThinkReliability**  
 Investigate Problems. Prevent Problems.  
 Houston, Texas 281-412-7766 ThinkReliability.com