

# CSB PROVIDES INTERIM RECOMMENDATIONS AFTER FATAL CHEMICAL RELEASE

Cause Map

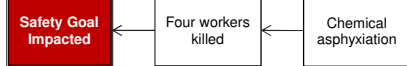
"DuPont has long been regarded as a safety leader in the chemical industry, but this investigation has uncovered weaknesses or failures in DuPont's safety planning and procedures. These interim recommendations lay out what the company at its La Porte facility should do to protect workers and the public."

- Vanessa Allen Sutherland, CSB Chairperson

## 2 Analysis

### Cause Map

Add detail as information becomes available.



## 3 Solutions

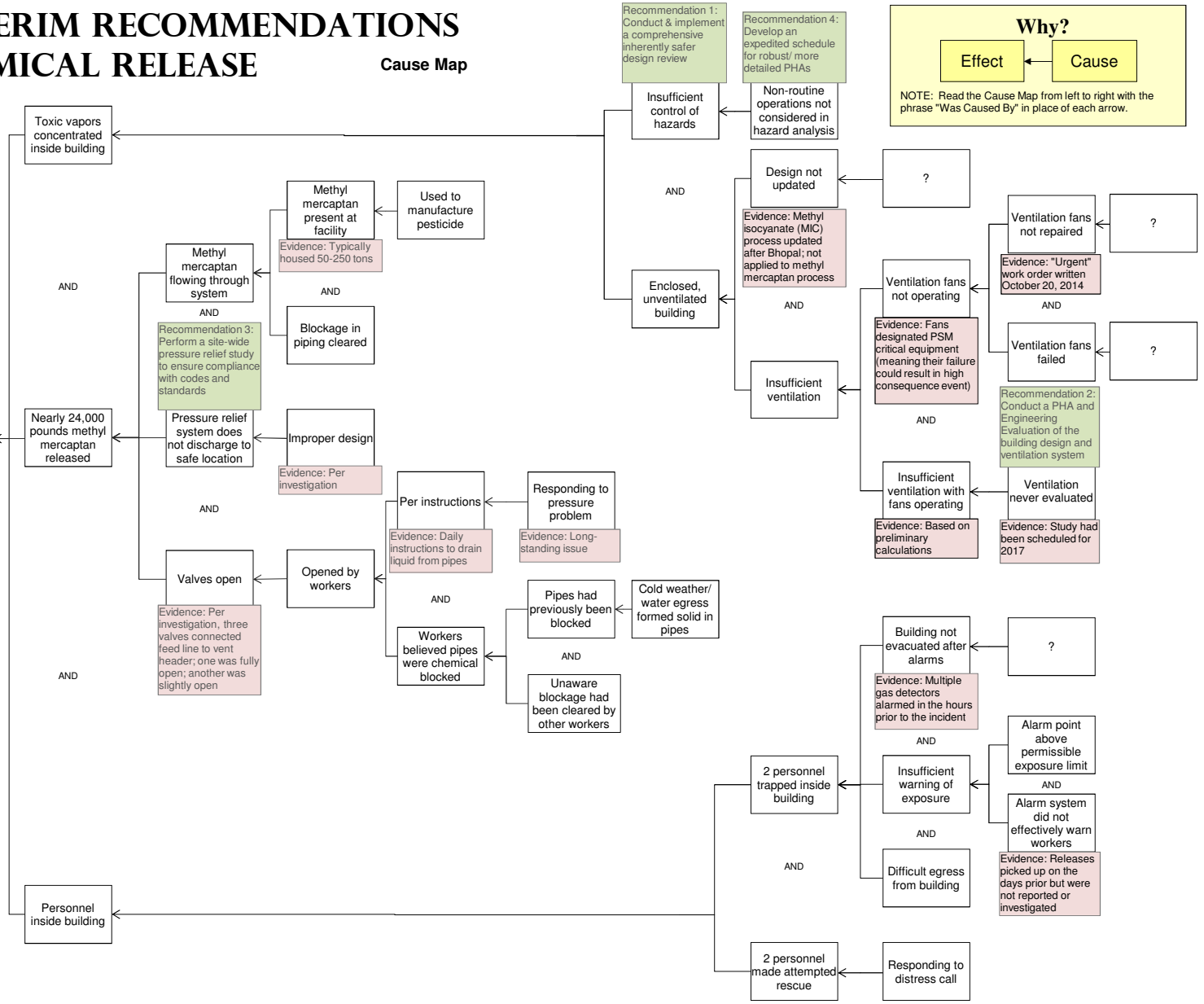
- Main recommendations include:
- Perform inherently safer design review
  - Ensure the manufacturing building is safe for workers
  - Provide relief system design that is safe for workers and the public
  - Complete more robust process hazard analyses
  - Assure active workforce participation
  - Promise public accountability and transparency

For a free copy of our final Cause Analysis prepared in Microsoft Excel, used to create this page, visit our web site.



Investigate Problems. Prevent Problems.  
Houston, Texas 281-412-7766 ThinkReliability.com

Copyright ThinkReliability 2015



**Why?**

Effect ← Cause

NOTE: Read the Cause Map from left to right with the phrase "Was Caused By" in place of each arrow.