

1 Problem

What Problem(s)
When Date
 Time
 Different, unusual, unique

Where Facility, site
 Unit, area, equipment
 Task being performed

Problem(s)	Fire
Date	May 22, 2008
Time	General Quarters called at 0820
Different, unusual, unique	Unmanned space; unauthorized storage of HAZMAT
Facility, site	USS GEORGE WASHINGTON
Unit, area, equipment	Auxiliary boiler exhaust & supply
Task being performed	Smoking in unauthorized areas

FIRE ON USS GEORGE WASHINGTON

Cause Map

When fire broke out on USS George Washington in an unmanned space that was being used to improperly store flammable materials, it took more than 8 hours to find the source of, and extinguish, the fire.

"It is apparent from this extensive study that there were numerous processes and procedures related to fire prevention and readiness and training that were not properly functioning. The extent of damage could have been reduced had numerous longstanding firefighting and firefighting management deficiencies been corrected."

- Admiral Robert F. Willard, commander of the US Pacific Fleet

Impact to the Goals

Safety	1 sailor seriously burned; 37 sailors injured
---------------	-----------------------------------------------

Cause Mapping is a Root Cause Analysis method that captures basic cause-and-effect relationships supported with evidence.

CAUSE MAPPING

Problem Solving • Incident Investigation • Root Cause Analysis

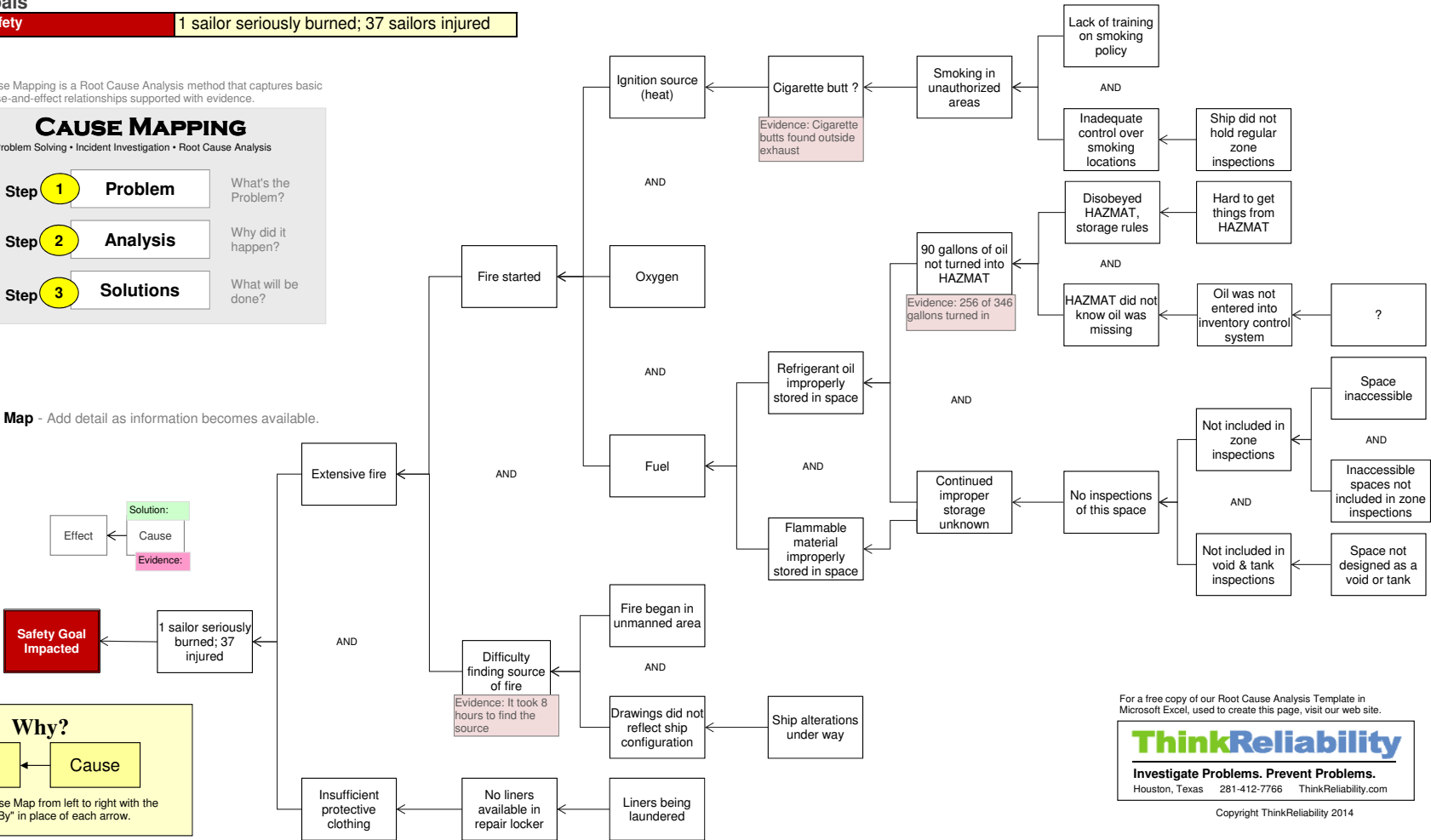
Step 1 Problem What's the Problem?

Step 2 Analysis Why did it happen?

Step 3 Solutions What will be done?

2 Analysis

More Detailed Cause Map - Add detail as information becomes available.



Why?

Effect

←

Cause

NOTE: Read the Cause Map from left to right with the phrase "Was Caused By" in place of each arrow.

For a free copy of our Root Cause Analysis Template in Microsoft Excel, used to create this page, visit our web site.

ThinkReliability

Investigate Problems. Prevent Problems.

Houston, Texas 281-412-7766 ThinkReliability.com

Copyright ThinkReliability 2014