

# 2014 EBOLA OUTBREAK IN GUINEA

## Cause Map

### Hundreds affected in 'unprecedented' outbreak

"The mortality rate is extremely important. Nine out of ten patients will die. If we look at this from the population's perspective, why would you go to a hospital if you have almost zero chance of getting out of it."  
 - Stéphane Hugonnet, World Health Organization (WHO) Department of Global Preparedness, Surveillance and Response

"The human body will fight Ebola virus, and the clinical care we provide to patients helps to give more time to the body to win that fight."  
 - Dr. Tim Jagatic, Médecins Sans Frontières (MSF) clinician deployed at Donka isolation ward

#### 1 Problem

<b>What</b>	Problem(s)	Ebola virus outbreak
<b>When</b>	Date	March 23, 2014 (WHO notified)
	Time	Ongoing
	Different, unusual, unique	High fatality rate, unprecedented migratory pattern, scarcity of medical professionals
<b>Where</b>	Facility, site	Guinea (surrounding countries also affected)
	Disease	"Zaire" strain of Ebola hemorrhagic fever
	Task being performed	Spread by bodily fluids
<b>Impact to the Goals</b>		
	<b>Public Safety</b>	At least 101 dead
		At least 157 believed to be infected
		Spread of disease
	Frequency	First Ebola outbreak in urban Guinea

#### 2 Analysis

**Public Safety Goal Impacted**

At least 101 dead

Bleeding shock

At least 157 believed to be infected

**Public Safety Goal Impacted**

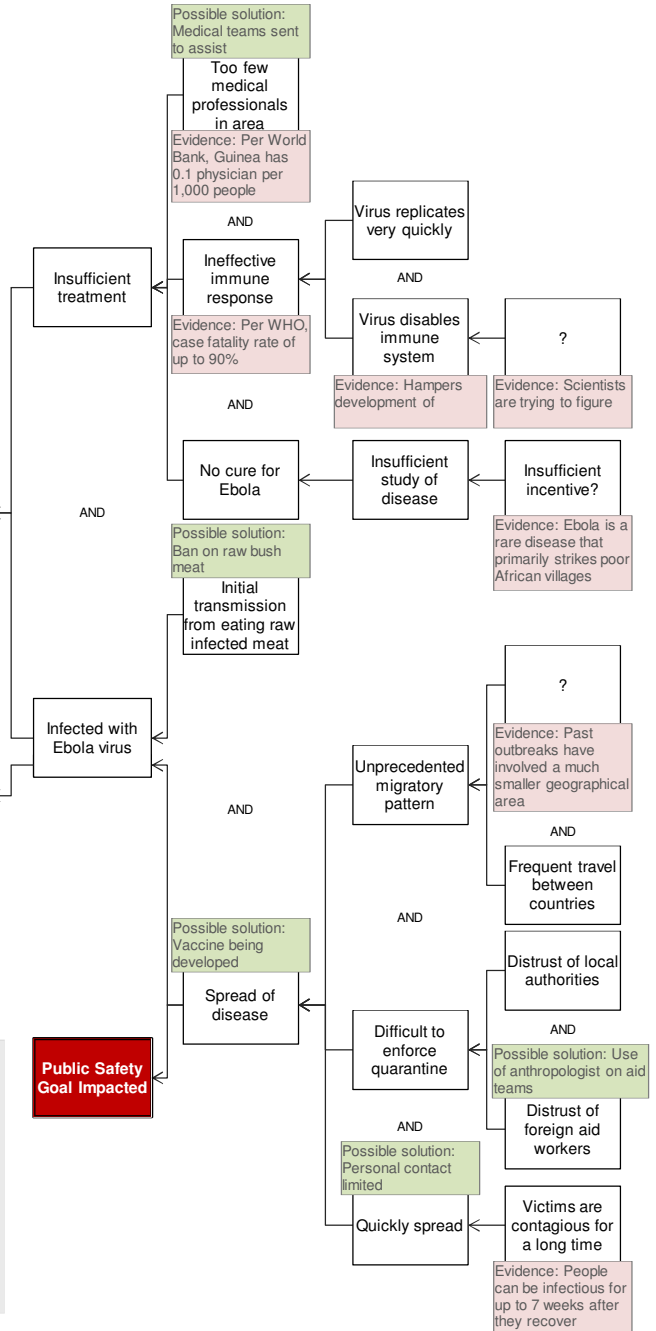
Infected with Ebola virus

Cause Mapping is a Root Cause Analysis method that captures basic cause-and-effect relationships supported with evidence.

### CAUSE MAPPING

Problem Solving • Incident Investigation • Root Cause Analysis

- Step 1 **Problem** What's the Problem?
- Step 2 **Analysis** Why did it happen?
- Step 3 **Solutions** What will be done?



#### 3 Solutions

No.	Action Item	Cause	Owner(s) (Names)
1	Medical teams sent to assist	Too few medical professionals in area	Doctors without Borders/ WHO
2	Vaccine being developed	Spread of disease	Researchers
3	Use of anthropologist on aid teams	Distrust of foreign aid workers	Medical teams
4	Personal contact limited	Quickly spread	World Health Organization (WHO)/ Local government
5	Ban on raw bush meat	Initial transmission from eating raw infected meat	

For a free copy of our Root Cause Analysis Template in Microsoft Excel, used to create this page, visit our web site.



Investigate Problems. Prevent Problems.  
 Houston, Texas 281-412-7766 ThinkReliability.com