

# 1 Problem

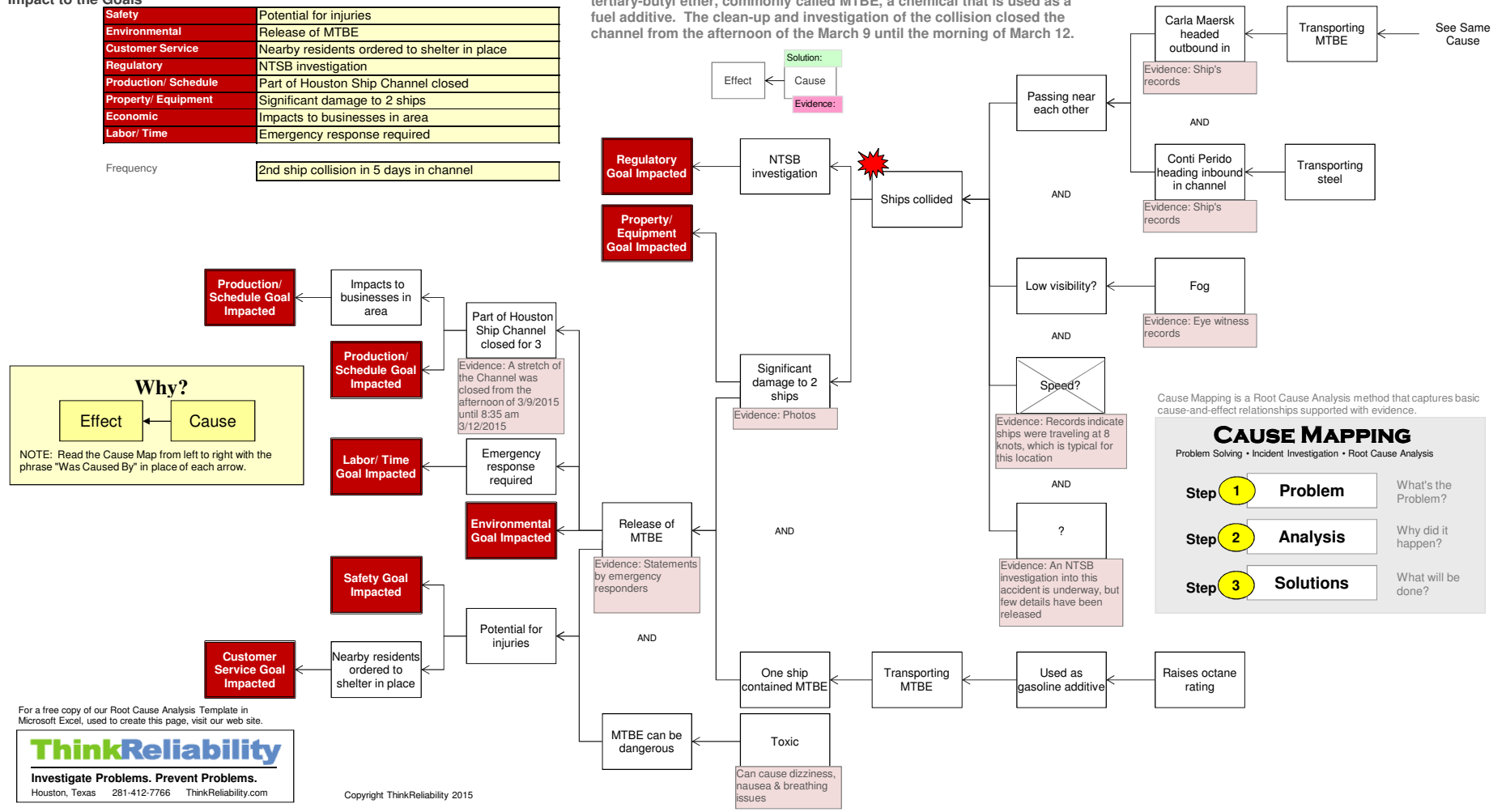
<b>What</b>	Problem(s)	Ship collision, release of MTBE
<b>When</b>	Date	March 9, 2015
	Time	~12:40 PM
	Different, unusual, unique	Foggy
<b>Where</b>	Facility, site	Houston Ship Channel
	Unit, area, equipment	Tanker ship and bulk carrier ship
	Task being performed	Transporting freight in and out of Port of Houston
<b>Impact to the Goals</b>		
	<b>Safety</b>	Potential for injuries
	<b>Environmental</b>	Release of MTBE
	<b>Customer Service</b>	Nearby residents ordered to shelter in place
	<b>Regulatory</b>	NTSB investigation
	<b>Production/ Schedule</b>	Part of Houston Ship Channel closed
	<b>Property/ Equipment</b>	Significant damage to 2 ships
	<b>Economic</b>	Impacts to businesses in area
	<b>Labor/ Time</b>	Emergency response required
	Frequency	2nd ship collision in 5 days in channel

# TWO 600' SHIPS COLLIDE

Cause Map

## Houston Ship Channel Closed After Chemical Released

On March 9, 2015, two large ships collided in the Houston Ship Channel, one of the busiest waterways in the United States. There were no major injuries reported, but the accident resulted in the release of methyl tertiary-butyl ether, commonly called MTBE, a chemical that is used as a fuel additive. The clean-up and investigation of the collision closed the channel from the afternoon of the March 9 until the morning of March 12.



For a free copy of our Root Cause Analysis Template in Microsoft Excel, used to create this page, visit our web site.

**ThinkReliability**  
Investigate Problems. Prevent Problems.  
Houston, Texas 281-412-7766 ThinkReliability.com