

Step 1. Outline

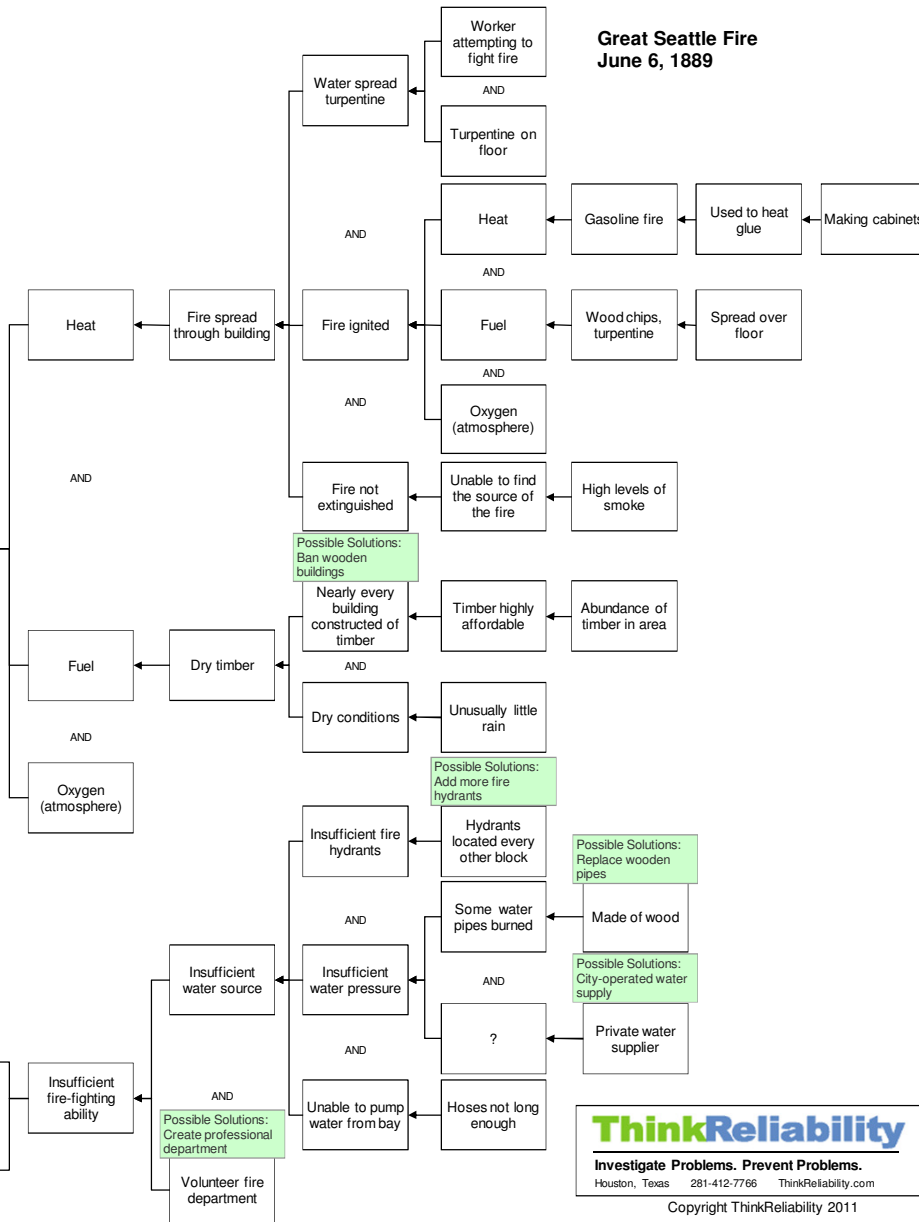
What	Problem(s)	Fire
When	Date	June 6, 1889
	Time	~2:30 p.m.
Where	Different, unusual, unique	Floor covered with turpentine
	State, city	Seattle, WA
	Facility, site	Cabinet-making shop
	Unit, area, equipment	Gasoline fire
	Task being performed	Heating glue

Impact to the Goals

Safety	1 confirmed death during fire Fatalities during cleanup process
Environmental	Severe damage to surrounding area
Cust. Service	Insufficient fire-fighting ability
Production-Schedule	Loss of water, electrical services
Property, Equip, Mtls	Destruction of >25 city blocks, including business district, 4 wharves, and railroad terminals
Labor, Time	Rebuilding of city

This incident \$20 M

Great Seattle Fire June 6, 1889



Step 2. Cause Map Detail Level

